

READ ALL INSTRUCTIONS BEFORE BEGINNING INSTALLATION

INSTALLATION INSTRUCTIONS

- 1- REMOVE THE EXISTING SUN VISOR AND KEEP THE FASTENING HARDWARE.
- 2- INSTALL THE BRACKETS ONTO THE EXISTING HOLES.
- 3- USE THE FASTENING HARDWARE FROM PREVIOUS VISOR.
- 4- FASTEN CENTRAL SUPPORT LEG AS ILLUSTRATED.
- 5- TEMPORARILY INSTALL THE SUN VISOR ON THE BRACKETS AS ILLUSTRATED
- 6- FASTEN EACH SIDE OF SUN VISOR TO EXISTING HOLE USING EXISTING HARDWARE.
- 7- MARK EXTRA SIDE HOLES OF SUN VISOR.
- 8- MARK THE CENTRAL SUPPORT LEG HOLE ONTO THE CENTRAL GASKET ON WINDSHIELD. **NOTE 8**

ATTENTION

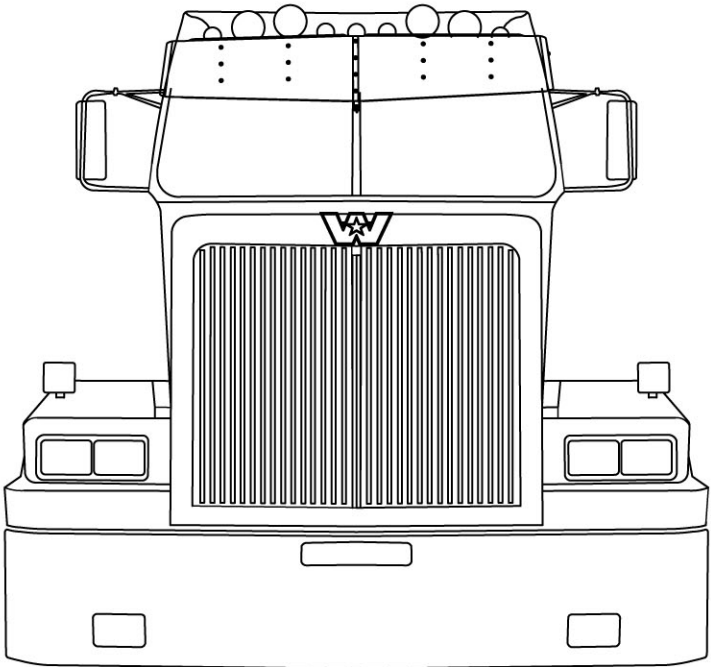
REMOVE SUN VISOR TO PREVENT DAMAGE

- 9- DRILL THE CENTRAL SUPPORT LEG HOLE AS MARKED AT 7/32" (.21875")DIA.
- 10- DRILL THE SIDE HOLES AS MARKED AT 1/2" DIA.
- 11- INSERT THE WELL NUTS IN THE HOLES.
- 12- SUN VISOR WITHOUT LIGHTS; SKIP TO STEP17.
- 13- INSTALL THE LIGHTS ON SUN VISOR
- 14- CONNECT THE LIGHTS AND DIRECT WIRE TOWARDS CENTER.
- 15- INSTALL AND CONNECT THE CENTRAL LIGHT TO THE OTHERS.

CAUTION

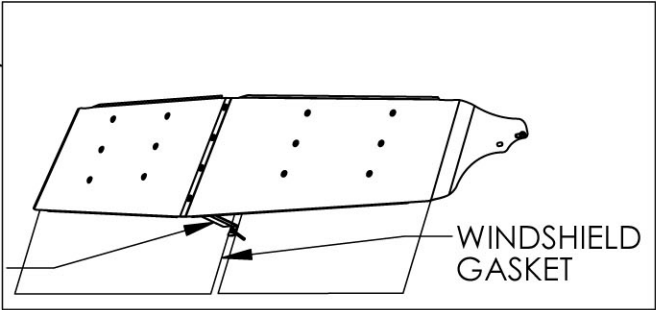
IT IS THE RESPONSIBILITY OF THE INSTALLER TO PLAN A HEAD THE ADEQUATE ELECTRICAL CONNECTION ACCORDING TO THE STANDARDS OF THE TRUCK MANUFACTURER AND DOT REGISTRATION.

- 17- REINSTALL THE SUN VISOR ON THE CAB.
- 18- IF SUN VISOR HAS LIGHT, CONNECT LIGHTS HARNESS TO THE TRUCK.
- 19- TIGHTEN ALL BOLTS AND SCREWS.



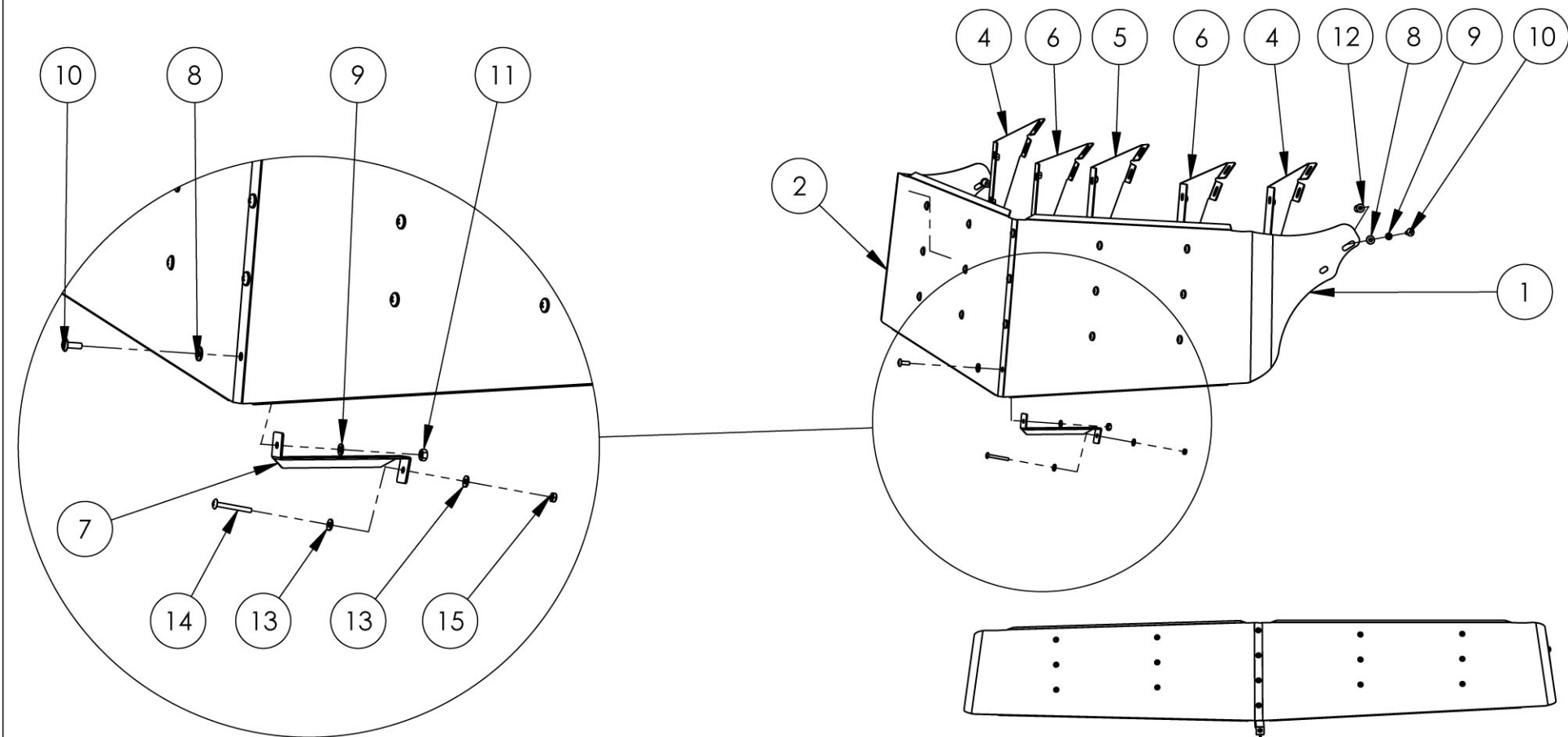
NOTE 8

CENTRAL
SUPPORT LEG



TRUX ACCESSORIES

TITLE: SUN VISOR WESTERN STAR CONSTELLATION GANGSTER SERIES 1998 & UP			
SIZE A	DWG. NO. TSUN-W1		
NAME	DATE	REV	DATE
DRAWN BY P.W.	22-10-2008	PH1	-
SCALE: 1:1	WEIGHT: LBS	SHEET: 1 OF 1	



ITEM No.	PART NUMBER	DESCRIPTION	QTY
1	M7531002SG	SUN VISOR PANEL	1
2	M7531002SD	SUN VISOR PANEL	1
3	K7531001BH	HARDWARE KIT INCLUDES:	1
4	-	PR9531001-U01	2
5	-	PR9531001-C01	1
6	-	PR9531001-U02	2
7	-	PR9531001-C02	1
8	-	FLAT WASHER 1/4"	18
9	-	LOCK WASHER 1/4" SS	18
10	-	TRUSS PHILIPS 1/4"-20NCX3/4"SS	18
11	-	HEX NUT 1/4"-20NC	16
12	-	WELL NUT 1/4"-20NC	2
13	-	FLAT WASHER ID#10 X OD 1/2" SS	2
14	-	TRUSS PHILIPS #10-32NFX1 3/4"SS	1
15	-	NYLON LOCK NUT #10-32NF SS	1

TRUX ACCESSORIES			
TITLE: SUN VISOR WESTERN STAR CONSTELLATION GANGSTER SERIES 1998 & UP			
SIZE A	DWG. NO. TSUN-W1		
NAME	DATE	REV	DATE
DRAWN BY P.W.	22-10-2008	PH1	-
SCALE: 1:1		WEIGHT: LBS	SHEET: 1 OF 1