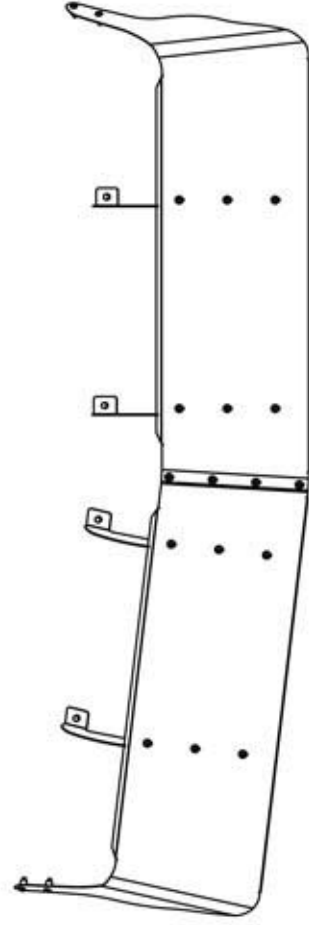


BEFORE BEGINNING INSTALLATION, READ ALL INSTRUCTIONS

INSTALLATION INSTRUCTIONS

- 1- INSTALL THE BRACKETS ONTO THE SUN VISOR.
- 2- TEMPORARILY INSTALL THE SUN VISOR ONTO THE CAB.
- 3- USING THE SUN VISOR, MARK OUT BRACKETS AND BOTH ENDS HOLES OF SUN VISOR.
ATTENTION
- 4- **REMOVE SUN VISOR TO PREVENT DAMAGE**
- 4- DRILL THE PREVIOUSLY MARKED OUT HOLES AT 1/2 IN. DIA.
- 5- INSERT THE WELLNUTS.
- 6- REINSTALL THE SUN VISOR ONTO THE CAB AS ILLUSTRATED.
- 7- TIGHTEN ALL BOLTS AND SCREWS FIRMLY.



FRONT VIEW

TRUX ACCESSORIES

TITLE:

SUN VISOR

FREIGHTLINER M2 112 2003 TO 2006

SIZE DWG. NO.

A

TSUN-F27

NAME

DATE

REV

DATE

DRAWN BY P.W.

07-04-2010

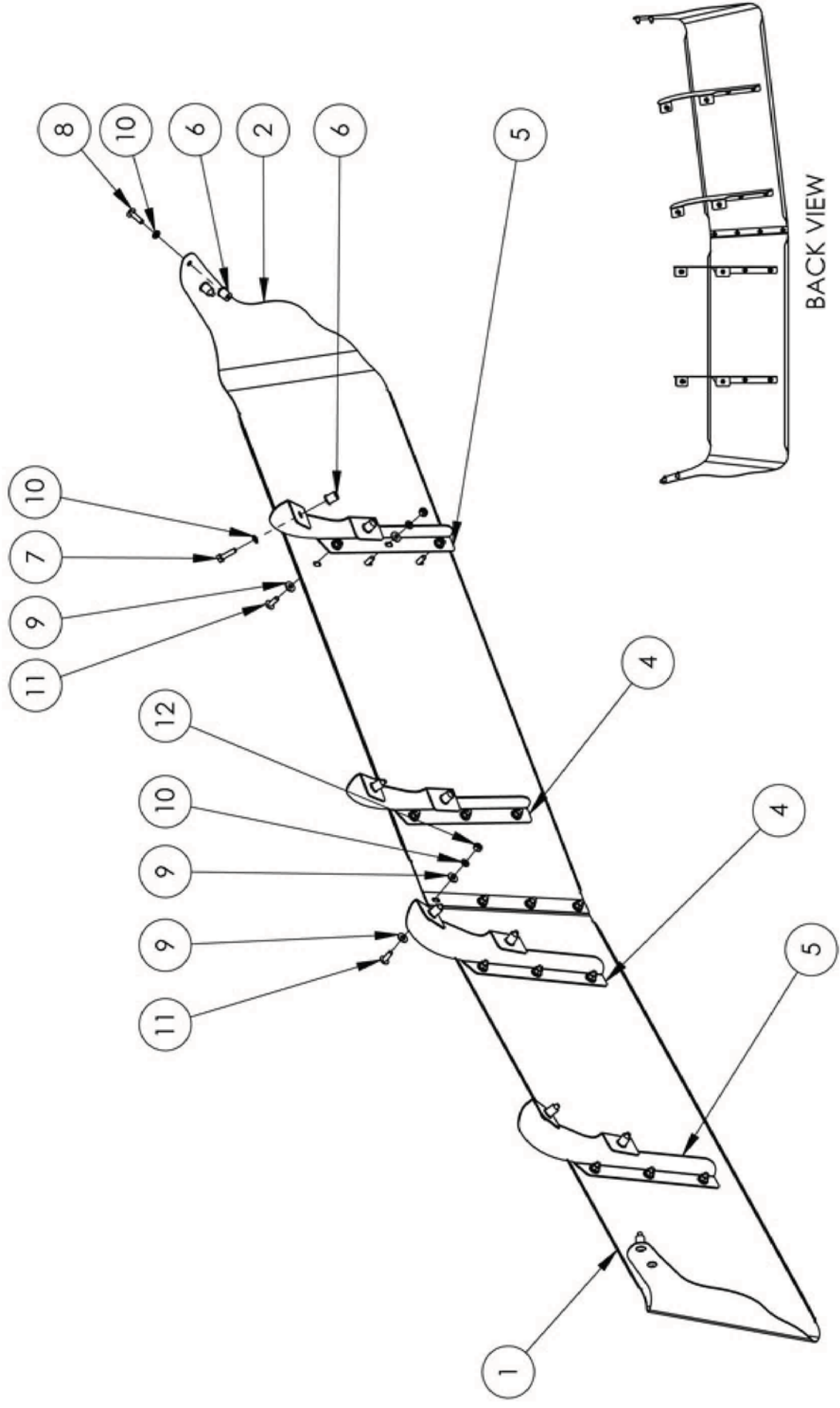
PH1

-

SCALE: 1:9

WEIGHT: LBS

SHEET: 1 OF 1



TRUX ACCESSORIES

TITLE: SUN VISOR
 FREIGHTLINER M2 112 2003 TO 2006
 SIZE DWG. NO. **A** **TSUN-F27**

ITEM NO.	PAIR NO.	DESCRIPTION	QTY
1	M7331023SG	SUN VISOR PANEL	1
2	M7331023SD	SUN VISOR PANEL	1
3	K7331023BH	HARDWARE KIT INCLUDES	1
4	-	PR9331023-U01	2
5	-	PR9331023-U02	2
6	-	WELL NUT 1/4"-20NC	12
7	-	HEX. BOLT 1/4NC X 1	8
8	-	TRUSS PHILIPS 1/4-20NC X 1	4
9	-	FLAT WASHER 1/4"	32
10	-	LOCK WASHER 1/4" SS	28
11	-	TRUSS PHILIPS 1/4"-20NCX3/4"SS	16
12	-	HEX NUT 1/4-20NC	16

NAME	DATE	REV	DATE
DRAWN BY	P.W.	PHI	
SCALE: 1:9	WEIGHT: LBS		