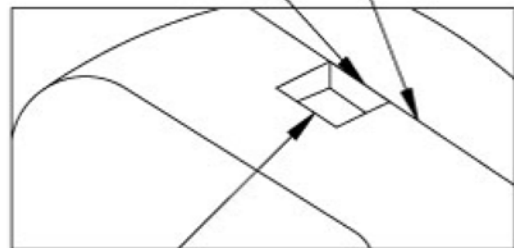


BOTTOM EDGE OF THE DEFLECTOR

NOTE 3



HOOD GRAB HANDLE

INSTALLATION INSTRUCTIONS

- 1- TEMPORARILY ATTACH BRACKETS TO THE BACKSIDE OF THE DEFLECTOR WITH HARDWARE AS ILLUSTRATED.
- 2- SLIP ON CHROMED TRIM EDGE TO BOTTOM EDGE OF THE HOOD DEFLECTOR AND CUT OFF EXCESS.
- 3- POSITION THE DEFLECTOR ON HOOD. BE SURE THAT THE DEFLECTOR IS FLUSH TO THE HOOD GRAB HANDLE. **NOTE 3**
- 4- MARK BRACKET HOLES ON HOOD.

ATTENTION

DO NOT MARK SIDE HOLES, IT WILL BE DONE IN A FURTHER STEP.

CAUTION

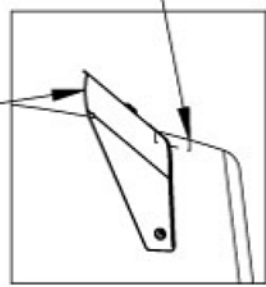
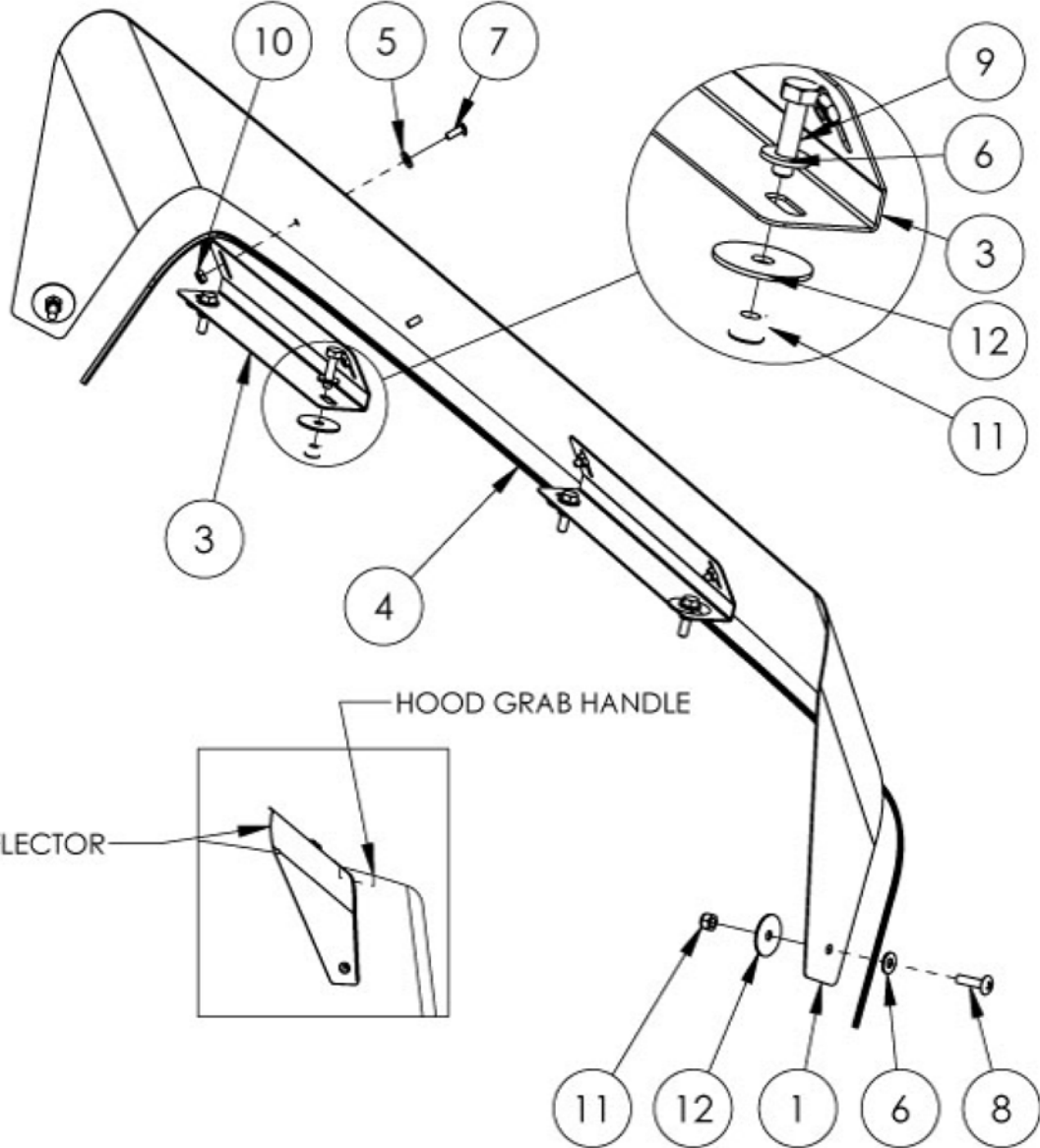
REMOVE THE HOOD DEFLECTOR TO PREVENT DAMAGE

- 5- DRILL HOLES AS MARKED AT 9/32" (.28125") DIA.
- 6- TEMPORARILY INSTALL THE DEFLECTOR AS ILLUSTRATED.
- 7- PRESS SIDE OF THE DEFLECTOR ONTO THE HOOD AND MARK HOLES.

CAUTION

REMOVE THE HOOD DEFLECTOR TO PREVENT DAMAGE

- 8- DRILL SIDE HOLES AT 9/32" (.28125") DIA.
- 9- INSTALL THE DEFLECTOR WITH HARDWARE AS ILLUSTRATED.
- 10- TIGHTEN ALL SCREWS AND BOLTS.



HOOD GRAB HANDLE

HOOD DEFLECTOR

TRUX ACCESSORIES

TITLE:
HOOD DEFLECTOR

SIZE
A

DWG. NO.

| NAME | DATE | REV | DATE |
|------------|------------|-------------|---------------|
| P.W. | 17-11-2008 | PH1 | - |
| SCALE: 1:6 | | WEIGHT: LBS | SHEET: 1 OF 1 |

| ITEM NO. | PART NO. | DESCRIPTION | QTY |
|----------|------------|--------------------------------|-----|
| 1 | M7121001SC | HOOD DEFLECTOR | 1 |
| 2 | K7121001BH | HARDWARE KIT INCLUDE: | 1 |
| 3 | - | PR34DEG | 2 |
| 4 | - | ES28-215-P80 | 1 |
| 5 | - | FLAT WASHER ID#10 X OD 1/2" SS | 4 |
| 6 | - | FLAT WASHER 1/4" | 6 |
| 7 | - | TRUSS PHILIPS #10-32NFX1/2" SS | 4 |
| 8 | - | TRUSS PHILIPS 1/4-20NC X 1 | 2 |
| 9 | - | HEX. BOLT 1/4NC X 1 | 4 |
| 10 | - | NYLON LOCK NUT #10-32NF SS | 4 |
| 11 | - | NYLON LOCK NUT, 1/4-20 UNC | 6 |
| 12 | - | FENDER WASHER 1/4"OD 1 1/4" | 6 |