



INSTALLATION GUIDE

UNIVERSAL HEADLIGHT ASSEMBLY FOR PETERBILT 379, 389, 357, 365, 367, 378, 567 & OTHER CUSTOM HEADLIGHT CONFIGURATIONS

(TLED-H104, TLED-H105, TLED-H106, TLED-H107)



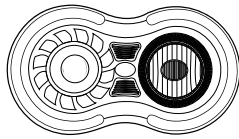
TOOLS REQUIRED: BOX CONTENTS:



1 x

PLIERS

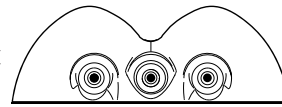
1 x



UNIVERSAL HEADLIGHT ASSEMBLY
(DRIVER OR PASSENGER)

Bullet Plugs & H4 Male Connector Attached

1 x



304 STAINLESS HOUSING BUCKET
(BOTTOM VIEW)

1 x



1 x

BLACK RUBBER GROMMET
& GASKET

1 x



H4 FEMALE CONNECTOR WITH 3 WIRES
(BLACK, WHITE & YELLOW)

1 x



3 COLORED EXTENSION WIRES
(BLACK, WHITE & YELLOW)

3 x



CRIMP CAPS

6 x



STAINLESS STEEL SCREWS

6 x



LARGE WASHERS

6 x



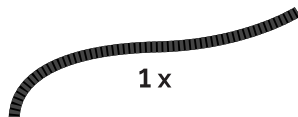
SMALL WASHERS

1 x



SCREWDRIVER
(PHILLIPS)

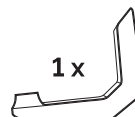
1 x



BLACK LOOM

(Included with TLED-H106 &
TLED-H107 ONLY)

1 x



304 STAINLESS
MOUNTING BRACKET
(Included with TLED-H106 &
TLED-H107 ONLY)

1 x



2 x



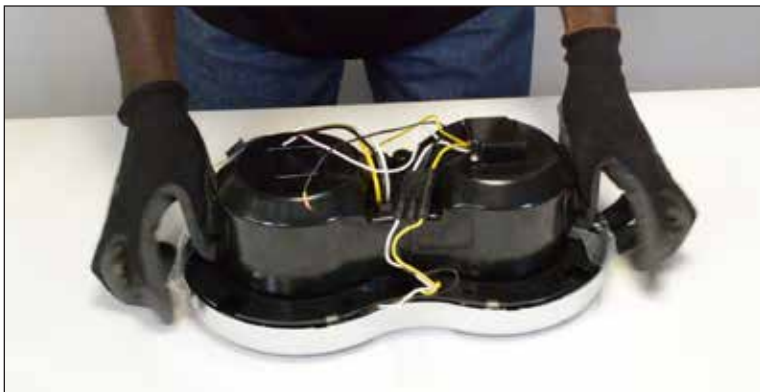
MOUNTING BRACKET BOLT
WASHERS & SPACERS
(Included with TLED-H106 &
TLED-H107 ONLY)

PLEASE NOTE:

- For this assembly, it is recommended that you work on a secure and clean surface area.
- Use the Headlight Bucket Support Insert found in the Retail Box for Step #12.
- Pliers are required to complete the installation.

1) PREPARATION OF HEADLIGHT

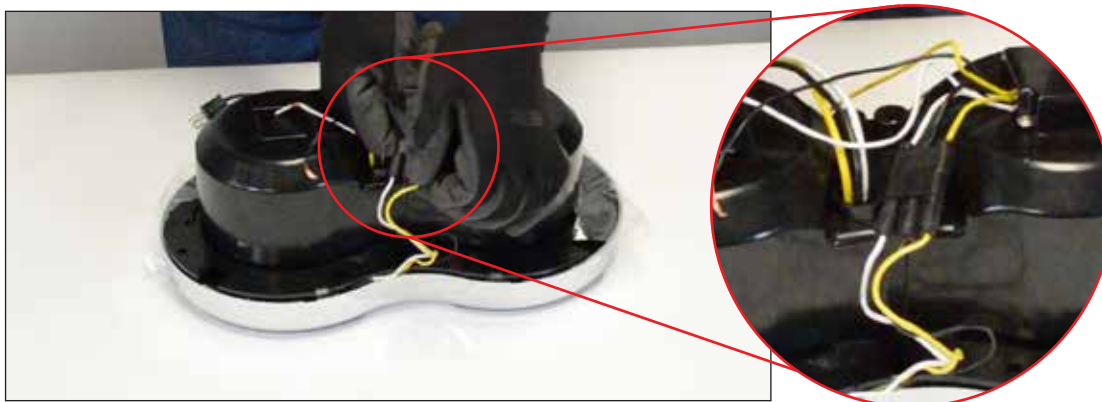
Place the *Headlight Assembly* face down on a dry, clean surface. To avoid surface scratches, keep the protective film on the Headlight Bezel.



PLEASE NOTE:

- DO NOT throw away the Headlight Bucket Support Insert as it will come in handy later on in the installation.

Disconnect the 3 *Male Bullet Plugs* of the Headlight Bezel from the *Female Bullet Terminal* located on the rear of the *Headlight Assembly*.

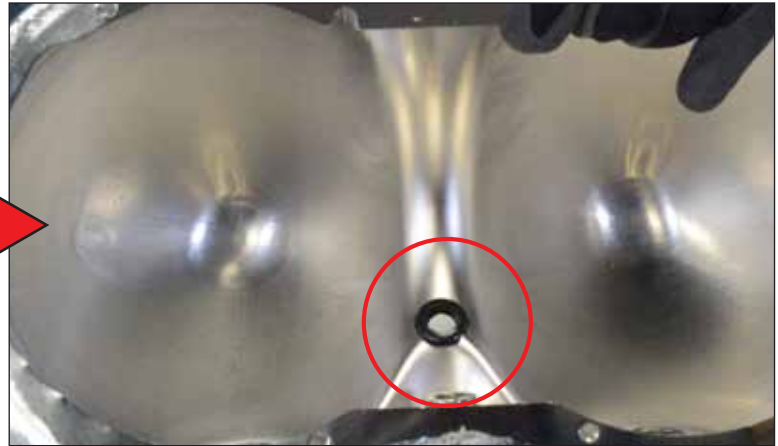
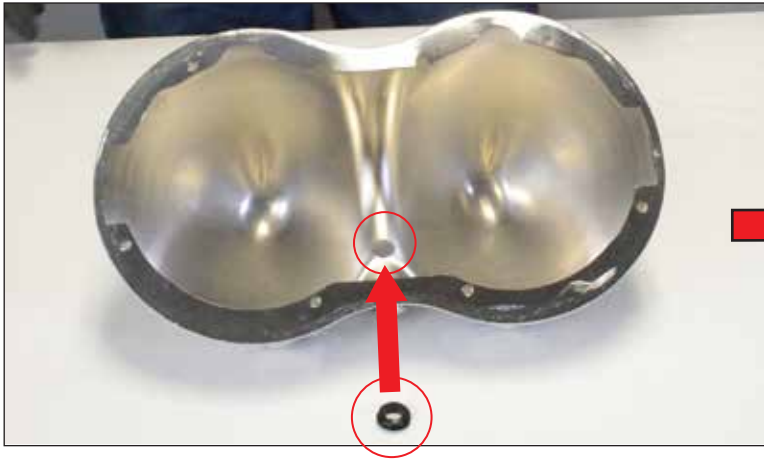


Detach the *Headlight Bezel* from the *Headlight Assembly* by **unclipping the bezel from the housing**. Remove the *Protective Film* from the lens of the *Headlight Assembly* & place the *Headlight Assembly* to the side for later use.

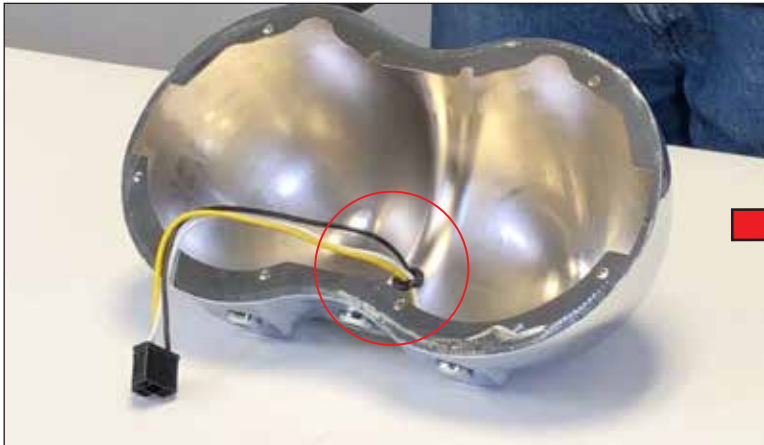


2) HEADLIGHT ASSEMBLY AND HOUSING BUCKET WIRING

Secure the *Black Rubber Grommet* to the center hole located on the back of the *Housing Bucket*.



Feed the *Yellow, Black and White Wires* from the *Female H4 Connector* provided through the *Black Rubber Grommet* that is located in the center hole of the *Housing Bucket*. The *Female H4 Connector* should remain on the inside of the *Housing Bucket*.

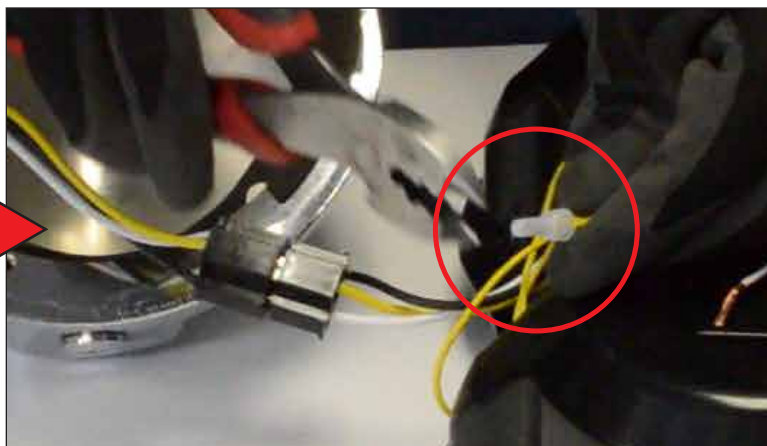


Place the *Gasket* on the *Housing Bucket* and feed the *Female H4 Connector* through the *Gasket*, making sure that the *Gasket* is in between the *H4 Connector* and the *Housing Bucket*.



Connect the Headlight Assembly's *Male H4 Connector* to the *Female H4 Connector* found on the *Housing Bucket*.

Locate the loose *Yellow, Black* and *White Wires* connected at the back of the *Headlight Assembly*. With the provided *Yellow, Black* and *White Extension Wires* connect the corresponding colored wires using the provided *Crimp Caps*.



Yellow Extension Wire to Yellow Headlight Wire
White Extension Wire to White Headlight Wire
Black Extension Wire to Black Headlight Wire

PLEASE NOTE:

- Pliers are required to clamp the Crimp Caps to the wires.

Pass the recently connected *Yellow, Black* and *White Extension Wires* through the *Gasket* and then through the *Black Rubber Grommet* located on the *Housing Bucket*.



PLEASE NOTE:

- 6 Wires should be running through the center hole of the Housing Bucket.
- 3 from the Female H4 Connector
 - 3 from the Extension Wires

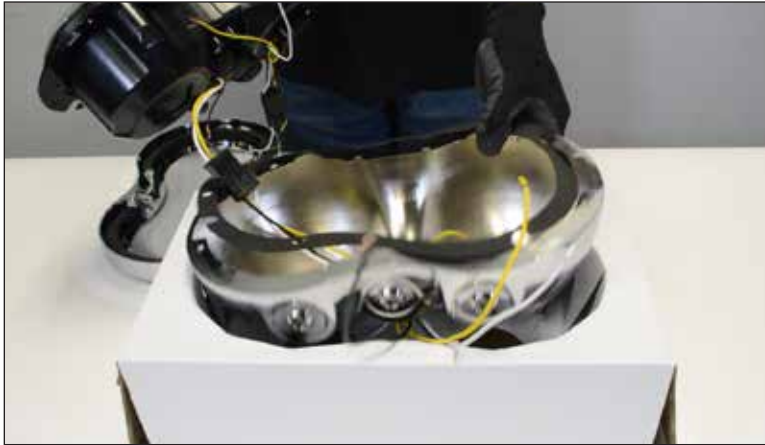
Reconnect the 3 *Male Bullet Plugs* from the *Headlight Bezel* to the *Female Bullet Terminal* located on the *Headlight Assembly*.



3) CONNECTING THE HEADLIGHT ASSEMBLY & HOUSING BUCKET

Place the *Headlight Support Insert* found in the Retail Box on a flat surface to use as an assembly support for the next steps. Place the *Housing Bucket* into the *Support Insert* facing upwards.

Place the *Gasket* over the *Housing Bucket* by aligning the holes from the *Gasket* with the screw holes of the *Housing Bucket*.

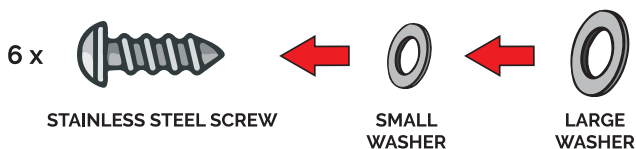


Without having any wires exposed, position the *Headlight Assembly* into the *Housing Bucket* and place onto the *Gasket*. Align the holes of the *Headlight Assembly* with the screw holes of the *Gasket* and the *Housing*.

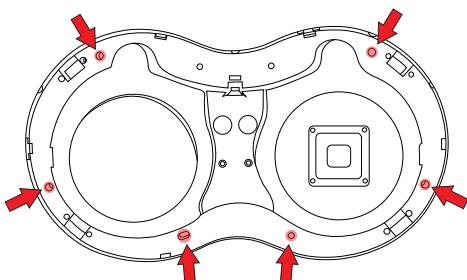


To secure the *Headlight Assembly* onto the *Housing Bucket*, place the provided *Screws* and *Washers* (see below for Washer order) into the screw holes located around the *Housing Bucket* (see below for locations). Using the provided *Phillips Screwdriver*, fasten all 6 screws to the *Headlight Assembly*.

WASHER MOUNTING:



SCREW HOLE LOCATIONS:



As you lower the *Headlight Bezel* onto the *Headlight Assembly*, feed the *Headlight Bezel Wires* through the gap shown below. Once the wires are clear, snap the *Headlight Bezel* back onto the *Headlight Assembly*.



The *Headlight Assembly* is now ready to be installed onto the *Universal Mounting Bracket* (TLED-H106 & TLED-H107 ONLY) and can be removed from the *Headlight Support Insert*.

A Black Loom is provided to protect the 6 wires running from the rear center hole of the Headlight Assembly. Install the Black Loom during the installation of the Headlight and Mounting Bracket to the truck.

WIRING CONFIGURATION (6 WIRES)

White: Headlight Ground | Auxiliary Ground

Black: Headlight High Beam | Auxiliary White Daytime Running

Yellow: Headlight Low Beam | Auxiliary Amber Turn Signal

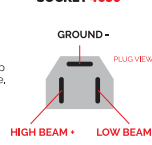
TROUBLESHOOTING TIPS:

PROBLEM	SOLUTION
1 - Weak or improper lighting	You may need to install a load resistor on each light that is experiencing these issues. Trux offers the TU-1039 for LED headlights (80W). Load resistors are used often for vehicles that originally came with Halogen bulbs. The truck's computer is programmed to expect a higher wattage draw from halogens and may sometimes send errors to the light if it is drawing the lower wattage draw of LEDs. These errors can present themselves in different ways such as intermittent flashing. The TU-1039 load resistor is the first line of defense for these issues. It will compensate for the low power wattage of the LED to make sure there is no error message on the dash so that no re-programming is required. Once installed, it will 'trick' the vehicle's computer and allow it to send the proper current needed for the LED.
2 - Error on the dashboard	
3 - Light flickering	
4 - My high beam is not working	Switch the 'black' ground (negative) wire with the 'white' low beam (positive) wire on your 'low beam' 3-wire H4 connector. 'White' will become ground (negative) and 'black' will become low beam (positive). If the H4 plug is the sealed version, you can switch the wires on your truck. These are universal headlights and each of the different trucks/years that they fit may have their ground wire on different sides or colors. In some cases, you may need to switch the black and red wire on the 'high beam' 2-wire H4 connector in order to switch the ground of the high beam. NOTE: Our LED headlights do not work on a double negative system. NOTE: If you have 4656 bulbs on your truck, you may need to perform the following 4656 to H4 conversion. (See diagram on the right)
5 - My low beam is not working	
6 - My Halo and/or marker is not working when connected to the low beam	
7 - The light doesn't work when I use the H4 extension	The H4 extension is designed to switch the ground (negative) to the opposite side. If you need the extra reach of the extension, please make sure the positive and negative of your vehicle match the positive and negative of the H4 extension.

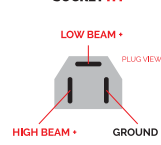
4656 TO H4 CONVERSION

These 2 terminals need to be swapped with each other. From the back of the socket where the wires enter the plastic socket, use a small screwdriver to release the plastic clip that holds the connectors. You can then swap them and snap back into place. Replacement sockets are also available at most auto parts stores if your socket does not come apart willingly, or is damaged.

VEHICLE LIGHT SOCKET 4656



VEHICLE LIGHT SOCKET H4



PLEASE NOTE:

For Installation Instructions on mounting the "Retro" Headlight Assembly to the Universal Mounting Bracket, please refer to the "Universal Mounting Bracket Installation Guide" PDF.

You can access the PDF via using the link (https://truxaccessories.com/wysigy/PDF/Mounting_Bracket_Installation.pdf) or by visiting the website at www.truxaccessories.com