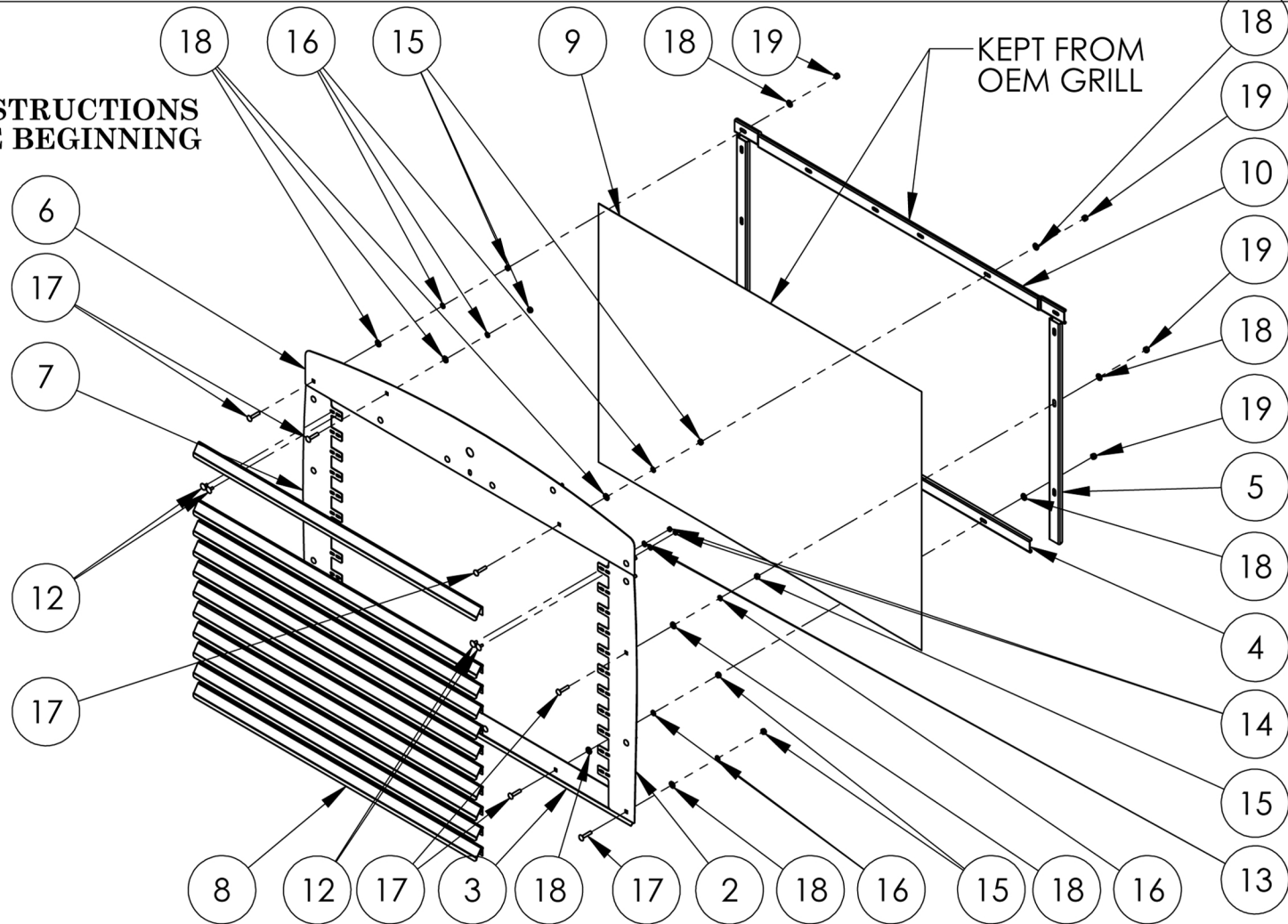


PLEASE READ THE INSTRUCTIONS COMPLETELY BEFORE BEGINNING



ITEM NO.	PART NUMBER	DESCRIPTION	QTY
1	-	FRONT GRILL	REF.
2	-	PR7223023-U04	1
3	-	PR7223023-U05	1
4	-	PR7223023-U03	1
5	-	PR7223023-U02	2
6	-	PR7223023-U06	1
7	-	PR7223023-U07	1
8	-	PR7223023-U01	11
9	-	FACTORY WIRE SCREEN (OEM)	-
10	-	FACTORY UPPER INNER BRACE (OEM)	-
11	-	BOLTS KIT INCLUDES :	-
12	-	CARRIAGE BOLT 10-32NFX1/2"SS	44
13	-	FLAT WASHER ID#10 X OD 1/2" SS	44
14	-	NYLON LOCK NUT #10-32NF SS	44
15	-	HEX NUT 1/4-20NC	20
16	-	LOCK WASHER 1/4" SS	20
17	-	CARRIAGE BOLT 1/4-20 X 1 1/4"LG	20
18	-	FLAT WASHER 1/4"SS	36
19	-	NYLON LOCK NUT, 1/4-20 UNC	16

TITLE:
FRONT GRILL W/11 LOUVER STYLE BARS
KENWORTH T800

SIZE DWG. NO.
A

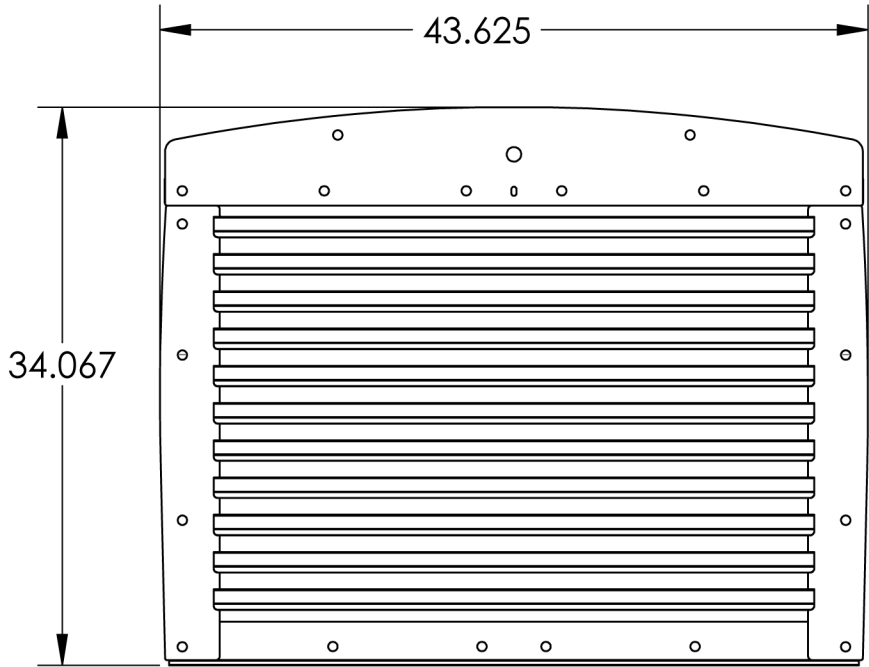
NAME	DATE	REV	DATE
DRAWN BY	P.W.	PH1	-

SCALE: 1:12	WEIGHT: LBS	SHEET: 1 OF 1
-------------	-------------	---------------

WARNING
BEFORE BEGINNING THE INSTALLATION OF YOUR NEW GRILL,
ENSURE THAT THE KIT YOU HAVE RECEIVED MATCHES YOUR
TRUCK MODEL

INSTALLATION INSTRUCTIONS

- 1- ARRANGE THE LOUVER BARS AND SURROUND PIECES ON A FLAT SURFACE. THE PART NUMBERS FOR THE SURROUND ARE ETCHED ON THE PARTS AND SHOULD BE ARRANGED AS FOLLOWS: CL7223023-U04 IS DRIVER CL7223023-U07 PASSENGER SIDE, CL7223023-U05 IS THE BOTTOM, CL7223026-U06 IS THE TOP AND CL7223023-U01 ARE THE LOUVERS STYLE BARS. YOU SHOULD ALSO HAVE TWO CL7221023-U02 AND ONE CL7221023-U03.
- 2- REMOVE THE FACTORY SURROUND, FACTORY INNER GRILL, FACTORY WIRE SCREEN AND THE FACTORY UPPER INNER BRACE. THE FACTORY WIRE SCREEN AND THE FACTORY UPPER INNER BRACE WILL BE REINSTALLED LATER.
- 3- TAKE THE -U04, -U05, -U06 AND -U07 PARTS, PEEL THE PVC FILM AWAY.
- 4- INSTALL THE -U04, -U05, -U06 AND -U07 AS ILLUSTRATED,DO NOT TIGHTENED.
- 5- TAKE THE LOUVER STYLE BARS (-U01), PEEL THE PVC FILM AWAY FROM THE BOLT HOLES. USING 1/2"LG CARRIAGE BOLTS, FLAT WASHERS AND LOCKNUTS, INSTALL ONLY THE TOP AND BOTTOM LOUVERS STYLE BARS.
- 6- FULLY TIGHTEN ALL THE CARRIAGE BOLTS ON THE GRILL SURROUND PIECES (-U04, -U05,-U06 AND -U07) AND THE LOUVER STYLE BARS -U01.
- 7- INSTALL THE REMAINING LOUVER STYLE BARS AND FULLY TIGHTEN ALL BOLTS. (AT THIS POINT, ALL BOLTS ON THE REPLACEMENT GRILL SHOULD BE FULLY TIGHTENED).
- 8- LOWER THE HOOD AND PLACE THE SCREEN ON THE BACK SIDE OF THE REPLACEMENT GRILL, THE HOLES IN THE SCREEN SHOULD GO OVER THE RECENTLY INSTALLED BOLTS FROM STEP #4.
- 9- REINSTALL THE FACTORY UPPER INNER BRACE AS ILLUSTRATED FULLY TIGHTEN
- 10- PEEL THE PVC FILM FROM THE TWO -U02 AND THE -U03 PARTS.
- 11- ATTACH THE TWO -U02 RIGHT AND LEFT AND THE -U03 BOTTOM AS ILLUSTRATED.
- 12- TIGHTEN ALL BOLTS AND PEEL THE REMAINING PVC FILM FROM YOUR GRILL.



TITLE:			
FRONT GRILL W/11 LOUVER STYLE BARS			
KENWORTH T800			
SIZE	DWG. NO.		
A			
NAME	DATE	REV	DATE
DRAWN BY	P.W.	PH1	-
SCALE: 1:32	WEIGHT: LBS	SHEET: 1 OF 1	