

ITEM NO.	DESCRIPTION	QTY
1	PANNEAU PARE SOLEIL	1
2	PANNEAU PARE SOLEIL	1
3	HARDWARE KIT INCLUDES:	-
4	9231024-C01	1
5	PR9231024-D01	1
6	9231024-D02	1
7	PR9231024-G01	1
8	9231024-G02	1
9	FLAT WASHER 1/4"SS	19
10	TRUSS PHILIPS 1/4"-20NCX3/4"SS	9
11	HEX BOLT 1/4"-20NCX1" SS	4
12	LOCK WASHER 1/4" SS	6
13	TRUSS PHILIPS 1/4-20NCX1"SS	2
14	NYLON LOCK NUT, 1/4-20 UNC	9
15	FLAT WASHER ID#10 X OD 1/2" SS	24
16	HEX. BOLT #10-32NF X 1"	12
17	NYLON LOCK NUT #10-32NF SS	12
18	HEX WASHER TEK #10X12 SS	4
19	LF.INSERT STL 1/4"-20NC X.160	6

TITLE: SUN VISOR KENWORTH  
GANGSTER SERIE CURVED GLASS  
ALL MODELS REGULAR CAB 2007 & UP

## READ ALL INSTRUCTIONS BEFORE BEGINNING INSTALLATION

### INSTALLATION INSTRUCTIONS

- 1- REMOVE THE EXISTING SUN VISOR AND RETAIN HARDWARE.
- 2- THEN SCREWBOTH PANEL TOGETHER
- 3- TEMPORARILY INSTALL THE SUN VISOR AS ILLUSTRATED
- 4- USING THE SUN VISOR, MARK HOLES ON BOTH ENDS OF SUN VISOR AND IF NECESSARY HOLES OF EXTERNAL BRACKETS.

#### WARNING

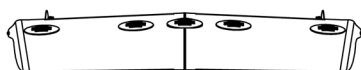
#### REMOVE SUN VISOR BEFORE DRILLING TO PREVENT DAMAGE

- 5- DRILL THE PREVIOUSLY MARKED OUT HOLES AT .4" DIA.
- 6- PLACE THE THREADED INSERTS.
- 7- IF WITHOUT LIGHTS; SKIP TO STEP #11.
- 8- INSTALL THE LIGHTS ON SUN VISOR
- 9- CONNECT THE LIGHTS AND DIRECT WIRE TOWARDS CENTER.
- 10- REINSTALL THE SUN VISOR ON THE CAB.

#### CAUTION

IT IS THE RESPONSIBILITY OF THE INSTALLER TO PLAN AHEAD THE ADEQUATE ELECTRICAL CONNECTION ACCORDING TO THE STANDARDS OF THE TRUCK MANUFACTURER AND DOT REGISTRATION.

- 11- REINSTALL THE SUN VISOR ON THE CAB.
- 12- TIGHTEN ALL BOLTS AND SCREWS FIRMLY.



TITLE: SUN VISOR KENWORTH  
GANGSTER SERIE CURVED GLASS  
ALL MODELS REGULAR CAB 2007 & UP