

ITEM NO.	PART NO.	PART NO.	PART NO.	PART NO.	DESCRIPTION	QTE
1	-	-	-	-	PANNEAU DE PARE SOLEIL	1
2	-	-	-	-	PANNEAU DE PARE SOLEIL	1
3	-	-	-	-	HARDWARE KIT INCLUDES:	1 REF
4	-	-	-	-	9731009-D00	1
5	-	-	-	-	9731009-G00	1
6	-	-	-	-	BOLTS KIT INCLUDES:	1 REF
7	-	-	-	-	TRUSS PHILIPS 1/4"-20NCX3/4"SS	3
8	-	-	-	-	TRUSS PHILIPS 1/4"-20NCX1/2" S	4
9	-	-	-	-	TRUSS PHILIPS 1/4"-20NCX1"SS	10
10	-	-	-	-	HEXAGONAL NUT 1/4"-20NC SS	7
11	-	-	-	-	FLAT WASHER 1/4"SS	13
12	-	-	-	-	LOCK WASHER 1/4" SS	17
13	-	-	-	-	HEX WASHER TEK #10X12 SS	4
14	-	-	-	-	WELL NUT 1/4"-20NC	10

TITLE:
SUN VISOR VOLVO HIGH ROOF
VN670, VN780, VT880 2003 & UP

SEE DWG. NO.

A

NAME	DATE	REV	DATE
DRAWN BY P.W.			-
SCALE: 1:11	WEIGHT: LBS	SHEET: 1 OF 1	

BEFORE BEGINNING INSTALLATION, READ ALL INSTRUCTIONS

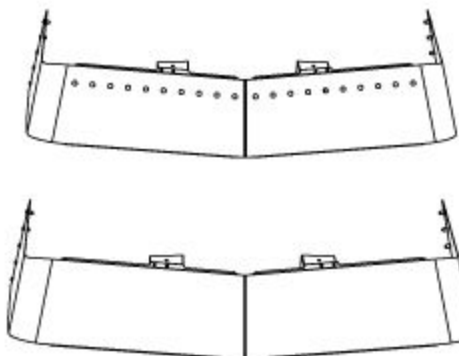
INSTALLATION INSTRUCTIONS

- 1- REMOVE THE EXISTING SUN VISOR.
- 2- INSTALL THE BRACKETS ONTO THE CAB AT THE SAME PLACE OF THE OEM SUN VISOR.
- 3- TEMPORARILY INSTALL THE SUN VISOR ONTO CAB.
- 4- USING THE SUN VISOR, MARK HOLES ON BOTH ENDS OF SUN VISOR.

ATTENTION

REMOVE SUN VISOR TO PREVENT DAMAGE

- 5- DRILL THE PREVIOUSLY MARKED OUT HOLES AT ½ IN. DIA.
- 6- INSERT THE WELLNUTS.
- 7- INSTALL THE LIGHTS ON SUN VISOR
- 8- CONNECT THE LIGHTS AND DIRECT WIRE TOWARDS CENTER.
- 9- FASTEN THE SUN VISOR USING THE FASTENING HARDWARE.
- 10- INSTALL AND CONNECT THE CENTRAL LIGHT TO THE OTHERS.
- 11- REINSTALL THE SUN VISOR ON THE CAB.



3M TAPE

SURFACE PREPARATION PROCEDURE FOR STICKING 3M ADHESIVE TAPE

Note: Do not use BRAKE CLEANER to clean surface.

The truck should be in an environment having an ambient temperature of 15 to 30 degrees C. Clean well the surface with soapy water. Completely dry the surface.

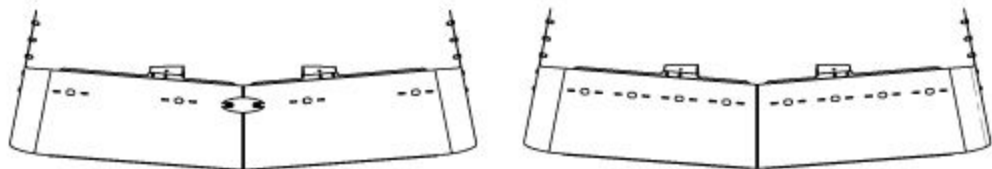
Take a clean piece of cloth (no tissue papers), generously dip in isopropyl alcohol and clean the surface till there is no dirt on the cloth. Let the surface dry out (maximum 5 minutes). Stick the accessory on to the cleaned surface very carefully and press the accessory on the surface with hands. (The accessory will stick instantly).

Let the accessory dry for 24 hours for maximum adhesion, before putting the truck in service.

CAUTION

IT IS THE RESPONSIBILITY OF THE INSTALLER TO PLAN AHEAD THE ADEQUATE ELECTRICAL CONNECTION ACCORDING TO THE STANDARDS OF THE TRUCK MANUFACTURER AND DOT REGISTRATION.

- 12- CONNECT LIGHTS HARNESS TO THE TRUCK.
- 13- TIGHTEN ALL BOLTS AND SCREWS FIRMLY.



TITLE:

SUN VISOR VOLVO HIGH ROOF
VN670, VN780, VT880 2003 & UP

SIZE DWG. NO.

A

NAME	DATE	REV	DATE
DRAWN BY P.W.			-
SCALE: 1:24	WEIGHT: LBS	SHEET: 1 OF 1	