

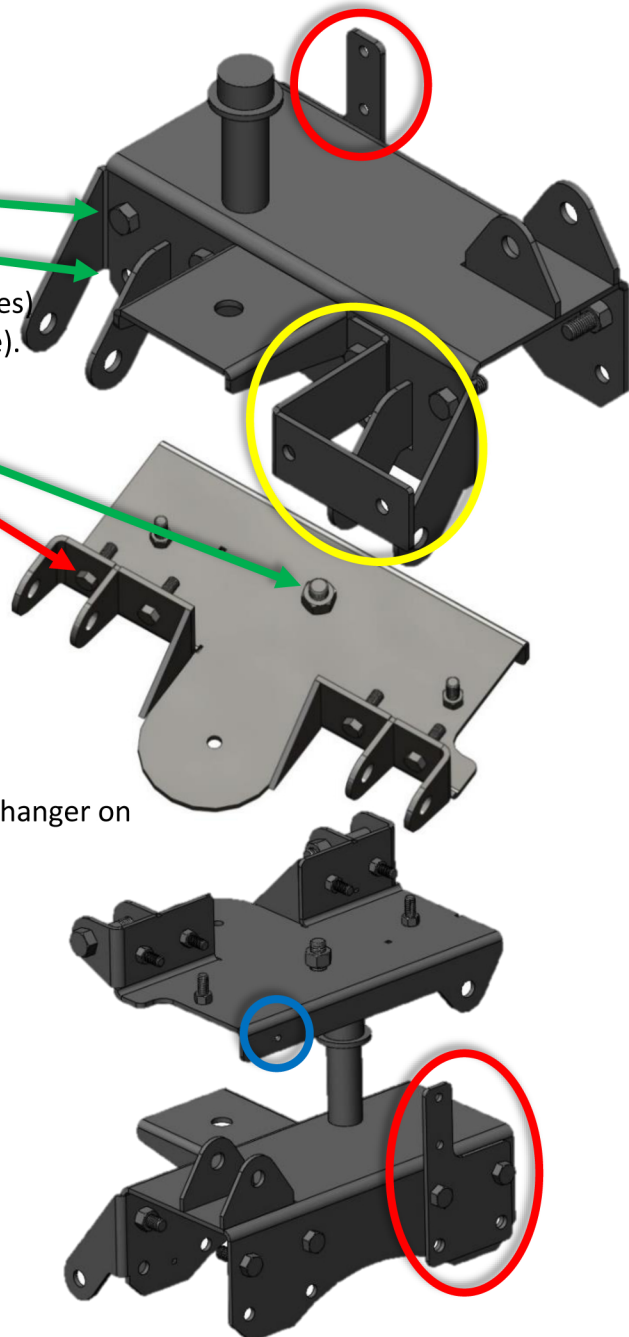
## PETERBILT AIR RIDE 1010

Included: Upper Bracket / Lower Bracket  
Air Line Bracket  
Torque Rod  
2 Shocks / 1 Air bag / Air Valve  
Air Valve Mount  
Fasteners and Rubber Bump Stop



1. Remove air lines and wiring from under back of cab and cross member.
2. Attach lower bracket to cross member and align 8 (4 front – 4 back) mounting holes.  
Upper holes: 379, 388, and 389  
Lower holes: 377, 378 and 386  
(Lower holes lift bracket 2" off cross member)
3. Be sure to attach "L" bracket for air valve (red circles) and "Z" bracket for hoses at this time (yellow circle).
4. Attach upper bracket to underside of cab using existing 9/16" hole to locate center of upper bracket.
5. Drill through remaining holes and secure to cab.
6. It should not be necessary to move airline manifold on passenger side of cab.
7. Install shocks, air bag, and torque rod as shown in first image.
8. Install air valve on bracket (red circles).
9. Connect linkage to valve and attach ball end to tab on upper bracket (blue circle).
10. Once air ride is completely installed, reinstall hose hanger on supplied bracket (yellow circle).

Peterbilt Air Bag P/N: 29-03200  
Peterbilt Shock P/N: 29-02455  
Peterbilt Valve P/N: SRWABK011



\*\*\*Peterbilt Factory Daycabs – Firewall/Radiator\*\*\*



Certain Peterbilt factory daycabs will need to have the supports connecting the radiator to the firewall disconnected. These can be bent and attached to the frame rails as shown in the photo above. Use a bushing between the frame rail and the lower mount.