

# Quarter Fender kit

## QF615KIT-PD

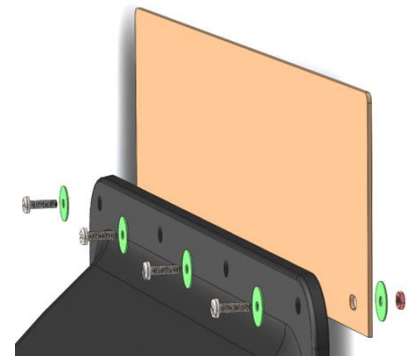
### Installation Guide

**Each kit contains** 2 x Pre-Drilled Quarter fenders with Advanced Integrated Anti-Spray, 2 x Mounting Tubes with Poly End Caps Inserted, and 2 x Zinc Plated Tube Clamps, 2 x Poly Top flaps and all Hardware

Thank you for choosing the Featherwing Quarter Fender kit. Your Unique Quarter Fenders. Incorporate advanced Featherwing spray suppression capabilities

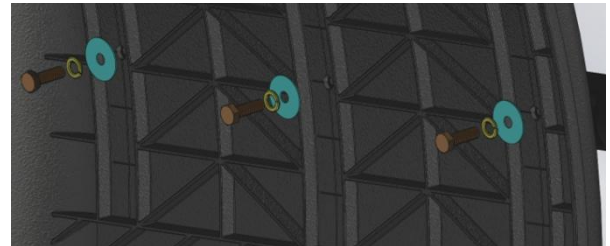
## Installation Guide

1. Fit the top flaps to the fenders using the Cross-Slot bolts, washers and nyloc nuts supplied and tighten to 7.5 foot/pound.

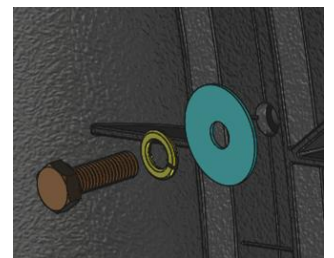


2 Bolt the tubes to the quarter fenders using the hex head bolts, washers and **spring washers** as per diagram and tighten to 11 foot/pounds

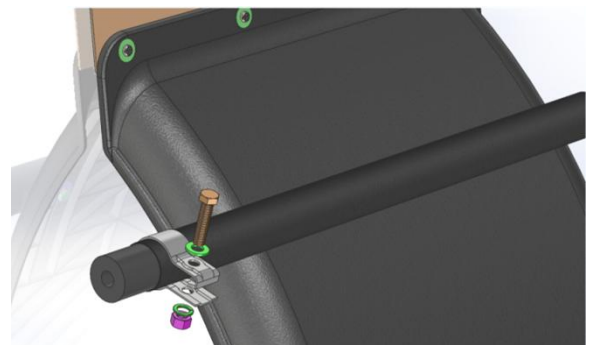
( If an alternative mounting position is required, locate the required height, then use a 3/8 drill bit to make new mounting holes. Once the Quarter Fender is mounted use the filler hole plugs included to fit / fill the original pre-drilled holes)



**\* SPRING WASHERS MUST BE INSTALLED AT ALLTIMES\***



3. Place the clamp over the mounting tube and then fit the tube onto the post. Align correctly and tighten the clamp to **fully** secure.



\*\*\*\*Please check **all fixings remain tight** as part of your routine maintenance\*\*\*\*