



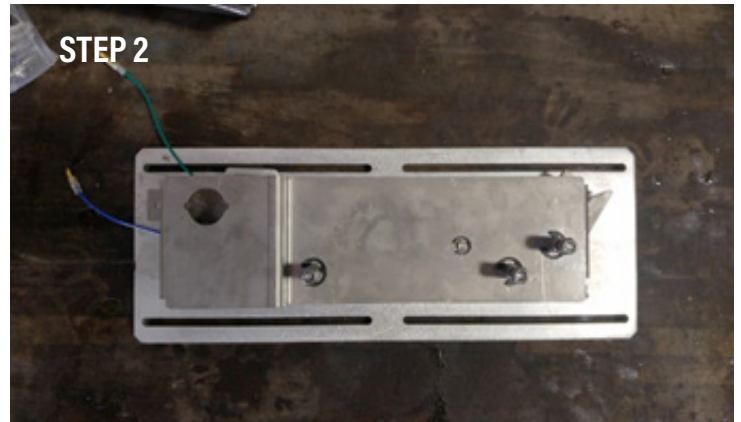
Recommended Tools

- | | | |
|----------------------|---------------------------------|---------------------|
| 1. Drill | 5. 3/4" Wrench | 9. 1/4" Drill Bit |
| 2. Hammer | 6. #2 Phillips Screwdriver | 10. 3/8" Nut Driver |
| 3. Adjustable Wrench | 7. 2" Hole Saw | 11. Wire Stripper |
| 4. 7/16" Wrench | 8. 1/2" or 3/4" Spade Drill Bit | |

OVERHEAD DOOR LOCK INSTALLATION

STEP 1 Review the parts that came in the box.

STEP 2 Mount Cargo Safe onto mounting plate using three included (1/4"-20) carriage bolts. Leave nuts loosened slightly to allow adjustment of Cargo Safe location on the plate later on in the installation process.



STEP 3 With the overhead door closed, hold the Cargo Safe assembly from step 1 up against the passenger side interior wall of truck box and the striker to the inside of the rear rollup door. Determine desired height and placement of the Cargo Safe and striker. The striker should align inside the Cargo Safe "U" shape catch when the catch is in the down position. The best height is generally the second door panel from the top. Careful not to mount the unit too high (up near the curve of the door track) this will cause the striker to hit the top corner of the Cargo Safe lock unit as the door moves up and down.

Mark the long slots of the plate on the wood interior with a marker.

Mount Cargo Safe and mounting plate at the desired height on the interior wall of the truck box using the four included self-drilling screws. The self-drilling screws fit in the four long slots at the top and bottom of the mounting plate. Make sure the screws are installed into the metal wall studs of the truck box.



STEP 4 Close overhead door. Rotate the catch on the Cargo Safe to the locked position (rotated to the down position). Align and mark striker location on overhead door. It should engage the catch and push the catch slightly down past horizontal. Use included ¼ inch carriage bolts to mount striker to overhead door. Two of the holes in the striker plate are slotted to allow mounting and testing of the lock before fixing the location of the striker with the last two bolts. Complete installation and test before installing the last two carriage bolts in the striker.

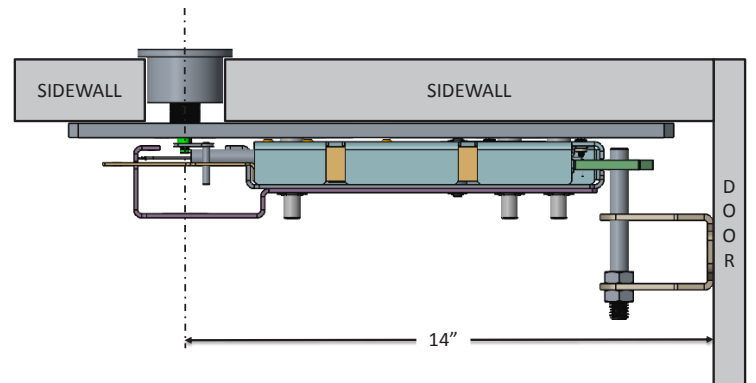
Unlock Cargo Safe using the manual override. Open and close the overhead door to ensure that the striker engages the Cargo Safe properly.



STEP 5 Remove Cargo Safe from the mounting plate. Mark the center of the large diameter hole which is used for the manual override.

For proper alignment the center of the large hole should align to be exactly 14 inches away from the inside of the door. If the hole is drilled incorrectly the striker may not align with the cargo lock properly.

Drill a pilot hole through the entire thickness of the wall. Using a 2.5" wood hole saw, drill a hole for the manual override. **ONLY GO THROUGH THE WOOD ON THE INTERIOR OF THE TRUCK BOX!** Then, using a 2" hole-saw cut through the rest of the truck wall and through the exterior sheet metal of the truck box.



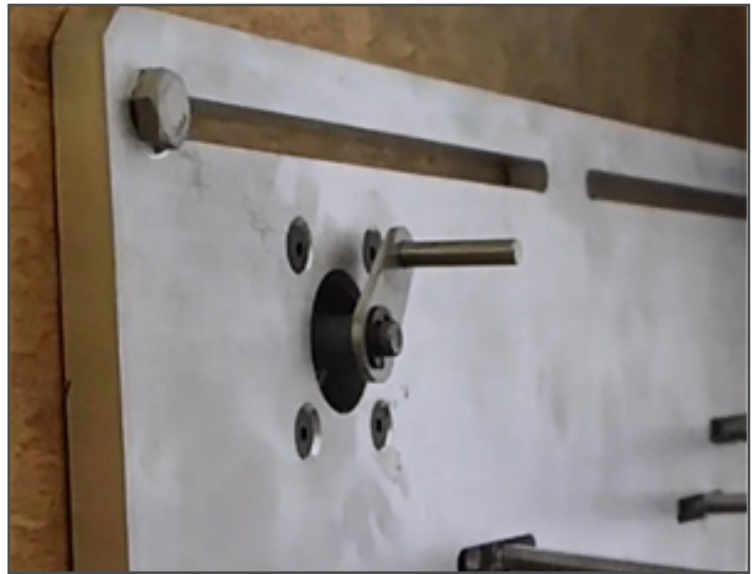
STEP 6 Mount the lock bezel in the side of the truck. Make sure the O-ring is installed on the lock bezel to create a watertight seal.



- STEP 7** Mount mounting plate back onto wall. Make sure that the carriage bolts to mount the Cargo Safe are installed in the plate before screwing the mounting plate to the wall. Align the screw holes in the bezel properly with the corresponding holes on the mounting plate. Use the included bolts to screw the lock bezel to the mounting plate.



- STEP 8** Place pawl on lock tail oriented so it's pointing to 1:00 o'clock position. The pawl has a notch that needs to align on the tail of the lock cylinder. You may have to rotate the lock bezel to get the pawl in the right position. Install e-ring onto the lock cylinder.



- STEP 9** Mount the Cargo Safe back onto the carriage bolts on the mounting plate. Install nuts and tighten.



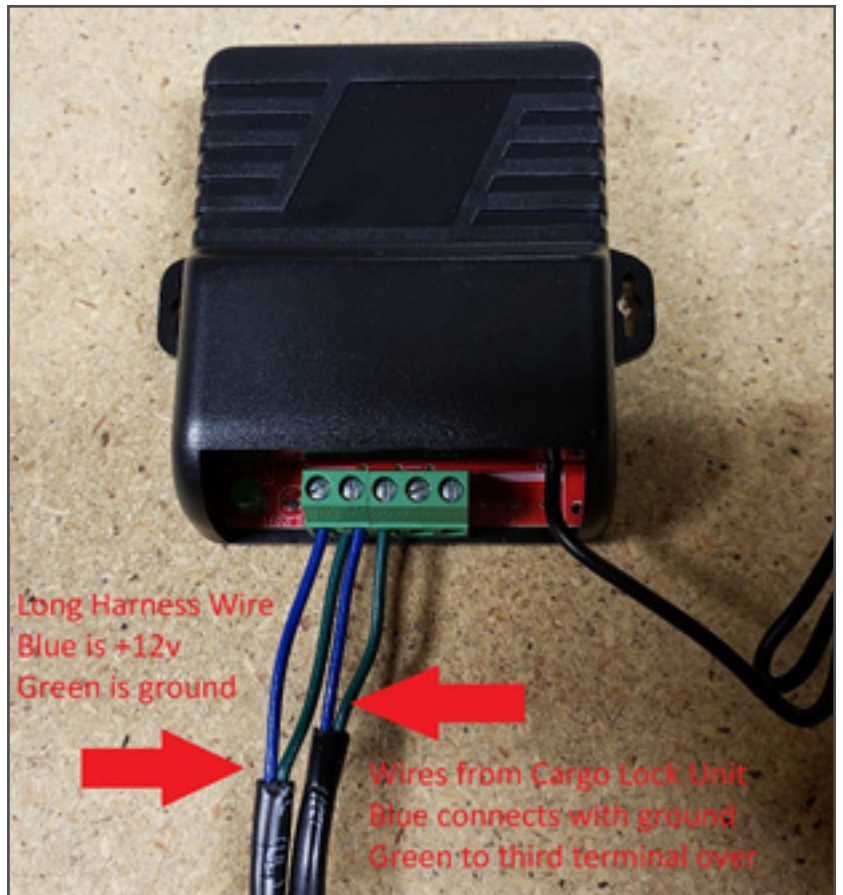
STEP 10 Mount the grey module box on the wall (just above the cargo safe). Drill a hole into the module box for the actuator wires and route the wires into the box. Ensure that the manual over ride handle does not catch on wires when pulled.



STEP 11 The long harness for the power will get ran from the battery to the module box. The long wire harness will run on the inside of the truck box wall. Start by drilling a 1/2" to 3/4" hole through the inside lower left corner of the module box. Continue to drill through the box and just the wood of the truck box. Remove the lower wood panel/panels from the truck box to gain access to the interior of the truck box wall. Drill a hole in the floor inside the wall to be able to run the wire from the outside of the truck to the inside of the wall.

Run the long harness starting from the battery. Leave enough slack to be able to connect to the battery later. Run along the underside of the truck preferably along the factory wire harness back to the hole drilled in the floor. Secure with cable ties as necessary. Ensure to route the wire to have clearance not to get damaged from any moving parts or the exhaust. Run the wire up through the hole in the floor and up into the module box. Reinstall the lower wood panel/panels.

Connect the wires from the long harness and cargo lock to the module as shown in the picture. Connect the other end of the long harness to the battery. The wire with the fuse holder to positive and the other to negative.



Program the remotes to the module. On the module press and hold the #1 mode switch button for 3 seconds till the light starts flashing rapidly. Press the button on the first remote. The light will flash once and go out. Repeat the process for the second remote.

Test the Cargo safe unit. Standing in the truck shut the door till it locks. Press the button on the remote. Lift the door open.

Use screws to secure the module to the back of the module box. (If left loose the button on the module may be inadvertently pressed causing the remotes to loose sync). Install the cover onto the module box. Install the sheet metal cover onto the Cargo Lock unit securing with locking nuts.

Test unit for proper operation. Pull the door all the way down till the Cargo Lock unit clicks locked. Hit the button on the remote to release the lock and open the door.