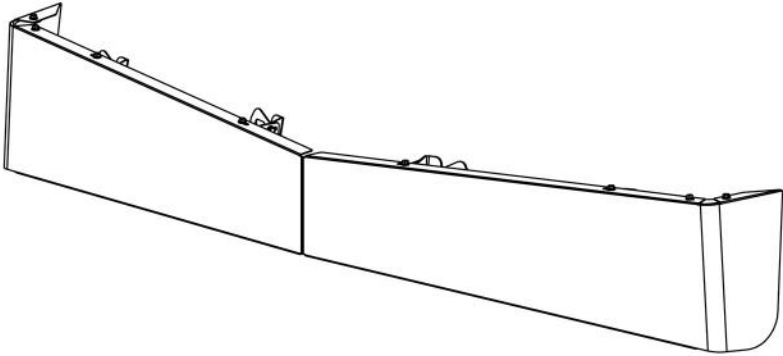
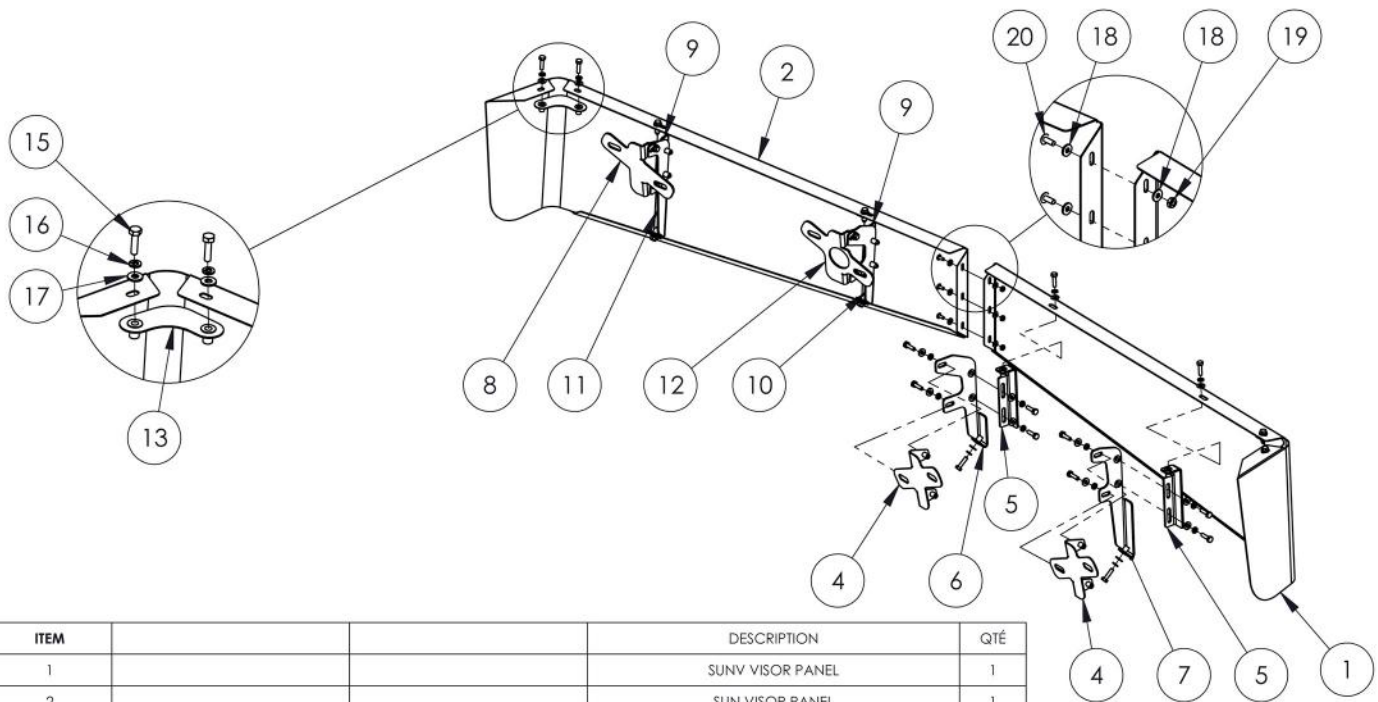


ASSEMBLY INSTRUCTIONS



MODELS & YEARS: 49X 2021&UP DAY CAB, FLAT ROOF	TITLE: SUN VISOR ASSEMBLY	DWG. NO.	SIZE A
		NAME	DATE
		DRAWN BY G.L.	2021-03-19
		SCALE: 1:12	WEIGHT: LBS SHEET: 1 OF 5



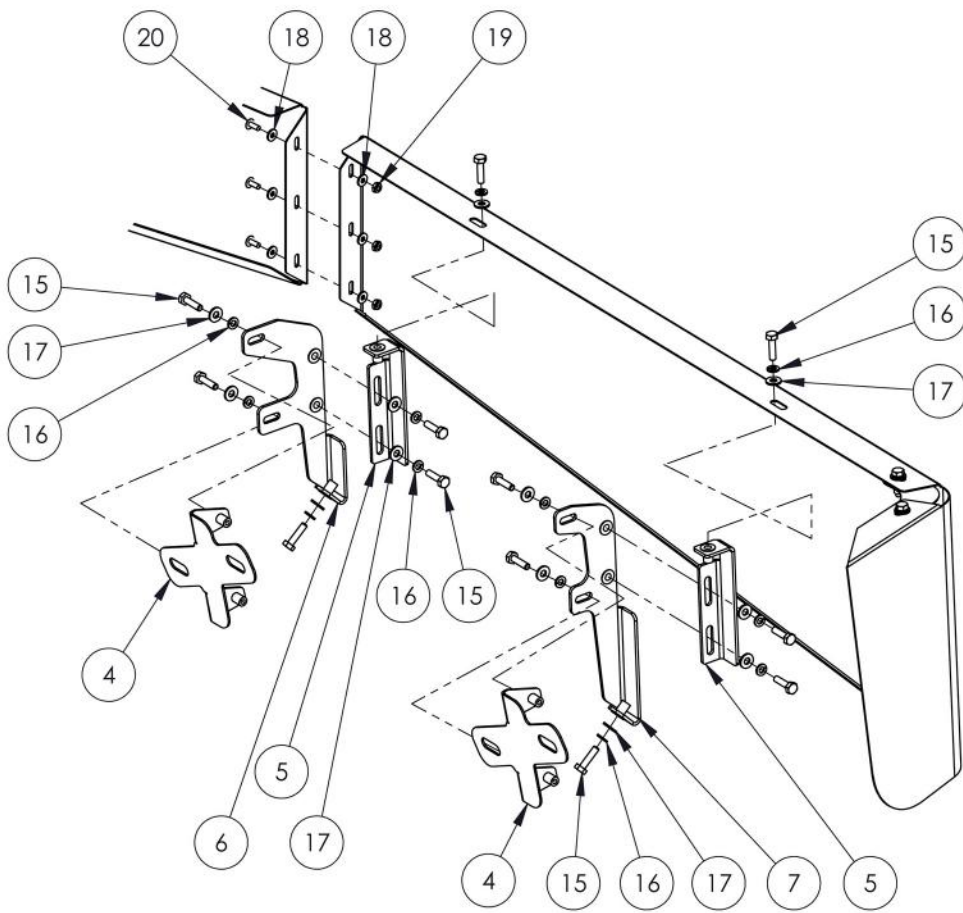
SEE NEXT PAGE FOR BOLTS DETAILS

ITEM		DESCRIPTION	QTE
1		SUNV VISOR PANEL	1
2		SUN VISOR PANEL	1
3	HARDWARE KIT		1
4		SUN VISOR SUPPORT	2
5		ADJUSTABLE BRACKET	2
6		SUN VISOR BRACKET	1
7		SUN VISOR BRACKET	1
8		SUN VISOR SUPPORT	1
9		ADJUSTABLE BRACKET	2
10		SUN VISOR BRACKET	1
11		SUN VISOR BRACKET	1
12		SUN VISOR SUPPORT	1
13		CORNER BRACKET	2
14	BOLTS KIT		1
15		HEX BOLT 1/4"-20NCX1" SS	28
16		LOCK WASHER 1/4" SS	28
17		FLAT WASHER 1/4	28
18		FLAT WASHER ID#10 X OD 1/2" SS	6
19		NYLON LOCK NUT #10-32 SS	3
20		TRUSS PHILIPS 10-32NFSS x1/2" LG	3

TITLE: SUN VISOR ASSEMBLY

SIZE DWG. NO.

NAME	DATE	REV	DATE
DRAWN BY G.L.	2021-03-19	0	
SCALE: 1:12		WEIGHT: LBS	SHEET: 2 OF 5



TITLE: SUN VISOR ASSEMBLY				
SIZE	DWG. NO.			
A				
NAME	DATE	REV	DATE	
DRAWN BY G.L.	2021-03-19	0	-	
SCALE: 1:6	WEIGHT: LBS		SHEET: 3 OF 5	

INSTALLATION INSTRUCTIONS

BE SURE TO READ AND UNDERSTAND ALL INSTRUCTIONS
BEFORE BEGINING INSTALLATION

CAUTION:

- TO PREVENT DAMAGES TO THE PIECES, REMOVE STAINLESS STEEL PROTECTIVE SHEET ONLY WHEN SPECIFIED IN THE INSTRUCTIONS.

REQUIRED MATERIAL: SCREWDRIVER WITH REQUIRED BITS AND WRENCHES

INSTRUCTIONS:

- 1- REMOVE EXISTING SUN VISOR AND KEEP FASTENERS FOR INSTALLATION OF NEW SUN VISOR SUPPORTS.
- 2- REMOVE STAINLESS STEEL PROTECTIVE SHEET OF ALL BRACKETS. **DO NOT REMOVE THE PROTECTIVE SHEET FROM THE SUN VISOR PANELS IT WILL BE DONE LATER DURING INSTALLATION.**
- 3- INSTALL SUN VISORS SUPPORTS AND BRACKETS ON TRUCK. USE FASTENERS KEPT AT STEP 1 TO BOLT BRACKETS ON TRUCK'S ROOF. DO NOT TIGHT BOLTS TOO FIRMLY TO ALLOW ADJUSTEMENT AT THE END OF INSTALLATION.
- 4- REMOVE PORTION OF THE STAINLESS STEEL PROTECTIVE SHEET ON SUN VISOR PANELS WHERE THE BOLTS WILL BE INSTALLED AND WHERE THE PANELS WILL BE JOINED TOGETHER.
- 5- ON A TABLE, ASSEMBLED BOTH HALVES OF THE SUNVISOR AND INSTALL CORNER BRACKETS. ADJUST HALVES HEIGHT AND TIGHT ALL SCREWS FIRMLY.
- 6- INSTALL SUN VISOR ON TRUCK. BEGIN TO PUT BOTTOM OF THE PANELS IN THE BRACKETS AND THEN FLIP THE PANEL OVER THE TOP OT THEM. BOLT SUN VISOR TO THE BRACKETS BUT DO NOT TIGHT THEM TOO FIRMLY TO ALLOW ADJUSTEMENTS.
- 7- ADJUST POSITION OF THE SUN VISOR ON TRUCK AND TIGHT ALL BOLTS FIRMLY.
- 8- REMOVE THE REMAINING STAINLESS STEEL PROTECTIVE SHEETS.



MODELS & YEARS:

49X 2021&UP
DAY CAB, FLAT ROOF

TITLE:

SUN VISOR ASSEMBLY

DWG. NO.

SIZE

A

NAME

DATE

DRAWN BY

G.L.

2021-03-19

SCALE: 1:24

WEIGHT: LBS

SHEET: 4 OF 5